

HYDROSTATIC COMPACT DRIVES SERIES E

• HYDRAULIC

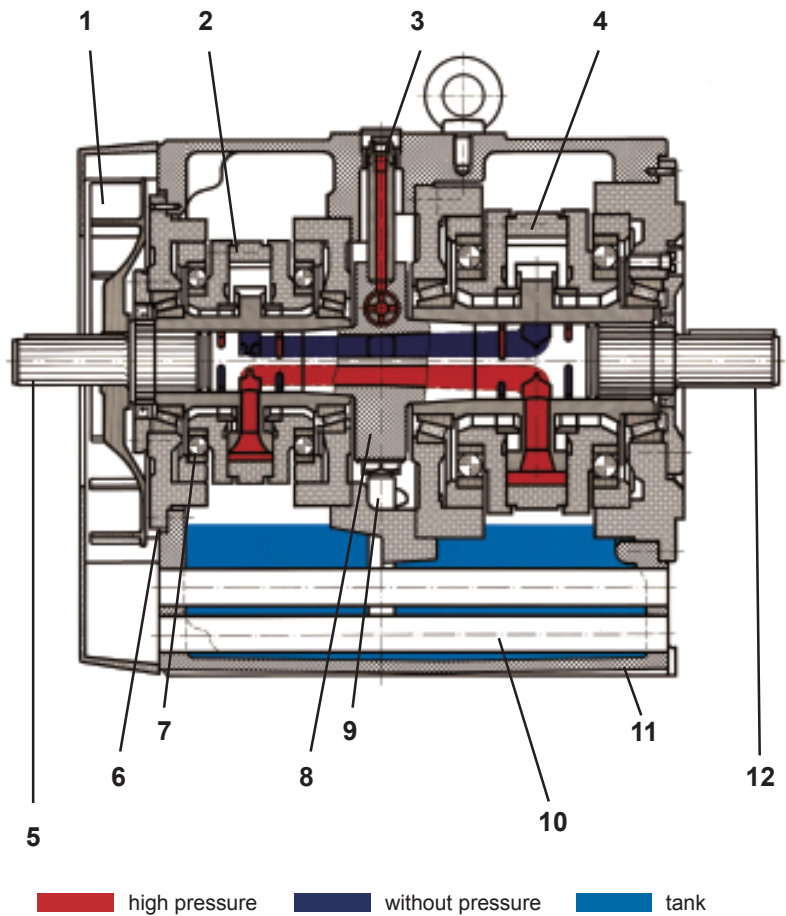


COMPOSITION AND FUNCTION

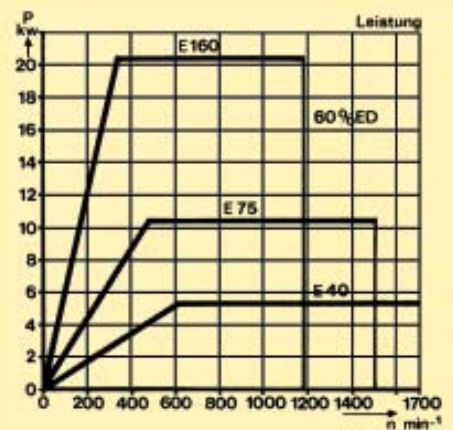
Hydro-pump and hydro-motor are units with adjustable work areas. They are rotatable and positioned in a common housing and connected by two moulded ducts. The common housing of hydro-pump and hydro-motor also serves as an oil tank. It is cooled by an integrated radial impeller.

Legend

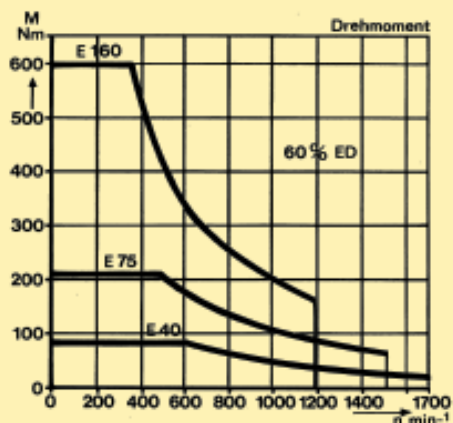
- 1 Impeller
- 2 Vane Pump
- 3 Pressure Tube
- 4 Vane Motor
- 5 Shaft Pump (Input)
- 6 Flange
- 7 Bearing
- 8 Pintle
- 9 Suction Pipe
- 10 Cooling Tube
- 11 Housing
- 12 Shaft Motor (Output)



Performance, speed and torque of the gears depends on the delivery flow of the pump in combination with the displacement of the hydro-motor. Both parameters can be adjusted.



The nominal torque can be collected as well at slow creep speed and even if the shaft of the driven assembly stands still.



TECHNICAL SPECIFICATION

Size in mm

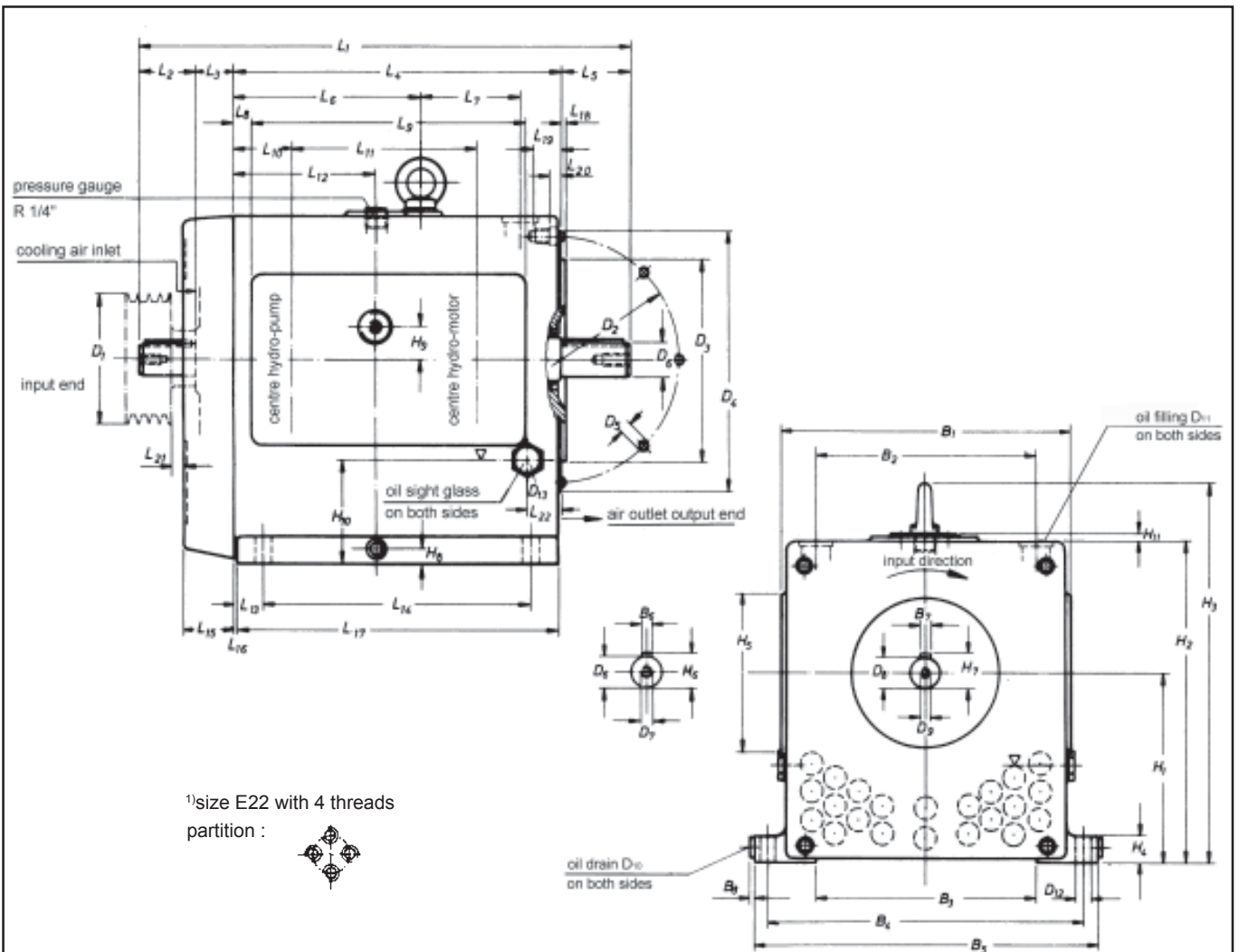
Type	B1	B2	B3	B4	B5	B6	B7	B8	H1	H2	H3	H4	H5	H6	H7	H8	H9	H10	H11
E 22	264	190	195	290	325	8	8	3	180	310	365	22	150	31	28	15	30	92	8
E 40	320	244	260	355	400	10	8	4	200	350	410	25	170	41	31	13	35	88	8
E 75	380	290	300	425	465	12	10	5	250	425	495	32	200	45	41	16	42	125	8
E 100	430	330	350	475	525	16	12	5	315	530	610	34	220	59	45	18	54	157	8
E 160	430	330	350	475	525	16	12	5	315	530	610	34	220	59	45	18	54	157	8

Size in mm

Type	L1	L2	L3	L4	L5	L6	L7	L8	L9	L10	L11	L12	L13	L14	L15	L16	L17	L18	L19	L20	L21 min.	L22
E 22	460	60	37	303	60	170	78	3	265	45	163	116	41	205	48	3	295	4	14	0	16	40
E 40	508	63	39	336	70	198	85	4	300	56	187	143	35	265	54	4	327	4	30	15	16	43
E 75	607	70	46	409	82	241	106	4	350	72	227	176	38	335	70	4	398	5	32	12	16	40
E 100	754	85	53	506	110	285	145	22	416	92	276	220	53	400	80	6	494	5	25	0	20	56
E 160	754	85	53	506	110	285	145	22	416	92	276	220	53	400	103	6	494	5	25	0	20	56

Size in mm

Type	D1 max.	D2	D3 h6	D4	D5	D6 k6	D7 depth	D8 k6	D9 depth	D10	D11	D12	D13	Weight Kg
E 22	110	215	180	236	M10	28	M10-22	25	M10-22	R 3/8"	M24x1,5	14	R 1/2"	85
E 40	140	265	230	286	M10	38	M12-28	28	M10-22	R 3/8"	M30x1,5	18	R 1"	128
E 75	160	300	250	318	M12	42	M16-36	38	M12-28	R 1/2"	M36x1,5	18	R 1"	227
E 100	200	350	300	395	M16	55	M16-36	42	M16-36	R 1/2"	M36x1,5	22	R 1"	390
E 160	200	350	300	395	M16	55	M16-36	42	M16-36	R 1/2"	M36x1,5	22	R 1"	395



HYDRAULIC SPECIFICATION ACCORDING TO VDI 3286

Characteristics Input

Type	max. Power consumption	I n p u t s p e e d a t	
	kW	rpm at 50 Hz	rpm at 60 Hz
E 18	2,2	1500	1800
E 22	4,0	1500	1800
E 40	5,5	1500	1800
E 75	11,0	1500	1800
E 100	15,0	1500	1800
E 160	22,0	1500	1800

The generally permissible input direction of rotation is clockwise with line of vision towards input shaft only. For reverse rotation direction please ask for detailed information.

Characteristics Output

Type	Speed range			O u t p u t		T o r q u e		Starting moment
	Adjustable motor rpm	Constant-motor rpm		kW	rpm	Nm	rpm	Nm
E 18	0-2000	0-1320	ED 100%	1,8	1000-2000	18	0-1000	24
			ED 60%	2,4	1320-2000	18	0-1320	
E 22	0-1800	0-630	ED 100%	3,0	630-1800	45	0-630	65
			ED 60%	3,7	630-1800	57	0-630	
E 40	0-1700	0-600	ED 100%	4,0	460-1700	85	0-460	100
			ED 60%	5,2	600-1700	85	0-600	
E 75	0-1500	0-475	ED 100%	7,5	335-1500	210	0-335	260
			ED 60%	10,2	475-1500	210	0-475	
E 100	0-1180	0-335	ED 100%	10,2	236-1180	425	0-236	710
			ED 60%	14,7	335-1180	425	0-335	
E 160	0-1180	0-335	ED 100%	16,0	260-1180	600	0-260	710
			ED 60%	20,6	335-1180	600	0-335	

Oil Capacity in ltrs. (standard oil: HLP 68):

E18	E22	E40	E75	E100	E160
1,7	3,5	5,5	9	16	16

The ambient temperature range is between -20° C and +40° C.
The fluid temperature range is between -20° C and +90° C.

Hydrostatic Compact Drives Series D

Naturally we supply all spare parts for compact drives series D.
Please do not hesitate to contact us for repairs.

SPITZNAS

Maschinenfabrik GmbH, Fellerstraße 4, D-42555 Velbert, Germany
Tel: +49-(0)2052-605-0 Fax: +49-(0)2052-605-29
E-Mail: sales@spitznas.com Internet: <http://www.spitznas.com>

10/08 E