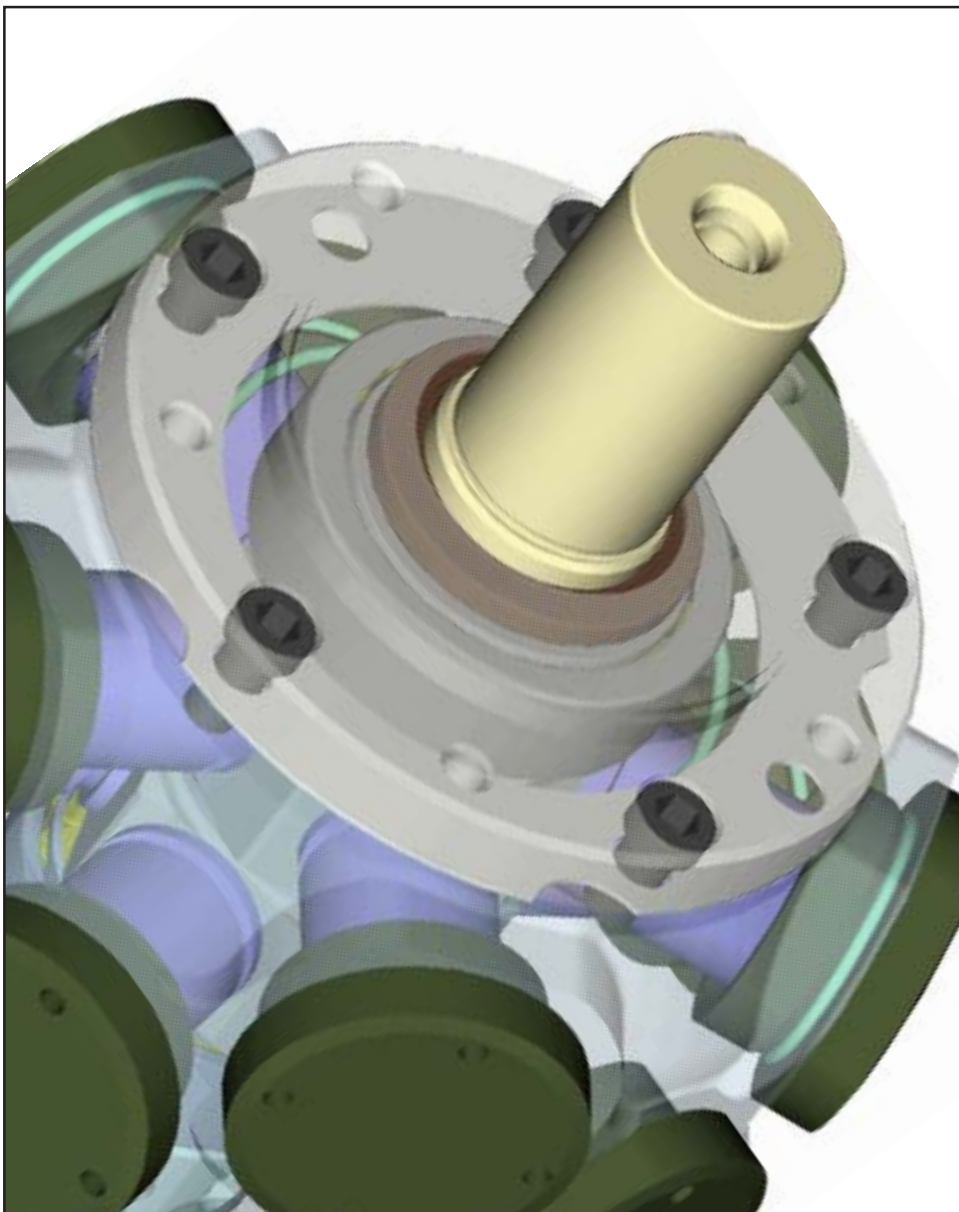


RADIAL PISTON MOTOR TYPE SFM - SERIES 1-2

• HYDRAULIC



Series 1



Series 1



Series 2

TECHNICAL SPECIFICATION

- **High accuracy control system**

The control cross section is opened and closed within an angle of 180° . The control cross section is precisely defined by the rotation angle of the shaft. High spots of compression and decompression are dramatically reduced.

- **Long life expectense**

The long life expectense is optimized by minimum and constant internal wear. The translatoric control (same speed at all points of control disk surface) secures absolute flat contact surfaces for the complete life expectense of the motor.

- **Self cleaning effect**

Particles are not suckt into the contact surface of the control system, these are wiped out by the sealing edges.

- **High temperature shock resistant**

Automatically balance of pressure and temperature influences controled with a hydrostatic spring preloaded control ring which guarantees the optimum hydrostatic balance at the complete pressure range.

- **High uniformity**

Maximum uniformity based on optimum control adjustments up to 97,5%.

- **Hight efficiency**

Volumetric efficiency up to 99% and a mechanical efficiency up to 95%.

- **High quality spare parts**

High quality preloaded roller bearings in X-setup allows high axial and radial forces on the shaft of the motor.

- **Hydrostatic balance**

Hydrostatic piston balance at series 1 and 2 as same as on the piston shoes at series 3 to 5.

- **Pressure liquid mediums**

The motors can be modified for HF-Emulsions.

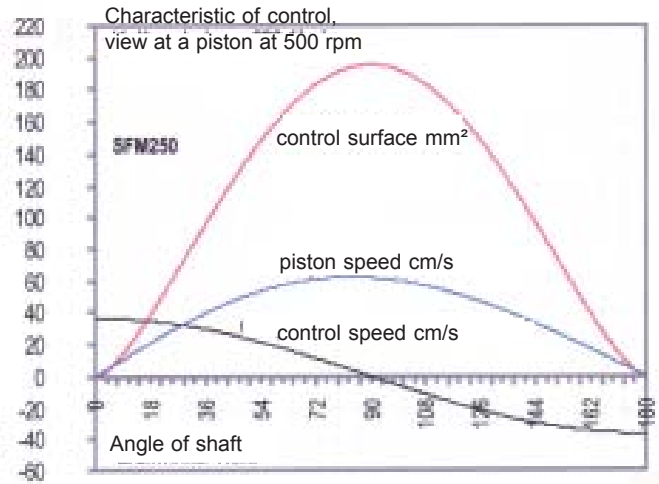
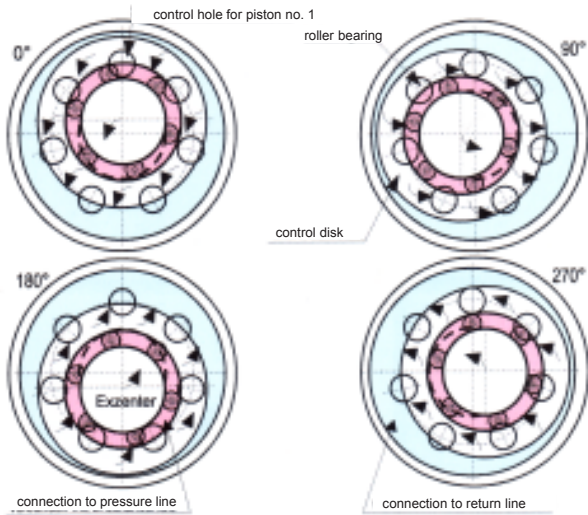
- **Options**



Version incl. measuring shaft, rev. transmitter, modular control valve bloks, brakes, gear boxes and more.

TECHNICAL DATA

SFM - Series 1 to 2 from 12 up to 255 cm³

The radial piston motors Type SFM - Series 1 to 5 of SPITZNAS are based on the principle of external pressured motors with revolving control valve and are used in stationary and mobile applications.



Radial piston motors Type SFM - Series 1-2 12 up to 255 cm ³	Type / Series	Geometrical capacity	Working pressure	Max. pressure	Speed	Torque	Weight (without oil)
		Vg cm ³	pwork bar	pmax. bar	n rpm	Mspec.,theoretical Nm	m kg
 	SFM-1	12	140	300	5-3600	0,20	12,5
	SFM-1	22	160	350	10-1600	0,35	17,8
	SFM-1	33	160	350	10-1600	0,52	18,0
	SFM-1	44	160	350	5-1600	0,69	19,0
	SFM-1	66	160	350	5-1300	1,00	19,2
	SFM-1	89	140	300	5-1000	1,40	22,0
	SFM-1	110	140	300	5-850	1,80	22,2
	SFM-2	85	250	420	5-850	1,30	42,0
	SFM-2	130	200	420	5-650	2,00	42,0
	SFM-2	165	250	420	5-850	2,60	60,0
	SFM-2	255	200	420	5-650	4,00	60,0

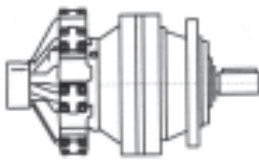
DELIVERY PROGRAM

Hydro gear motors

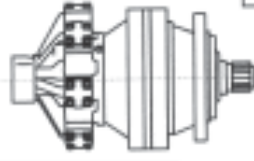
Hydro motors with brake

Hydro gear motors with brake

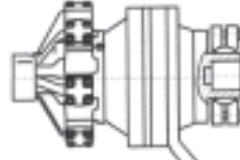
On request !



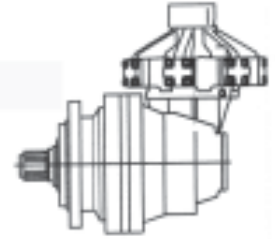
Cylindrical key shaft
DIN 6885



Spline shaft DIN 5482



Splined hollow shaft DIN
5482, with torque lever
available.



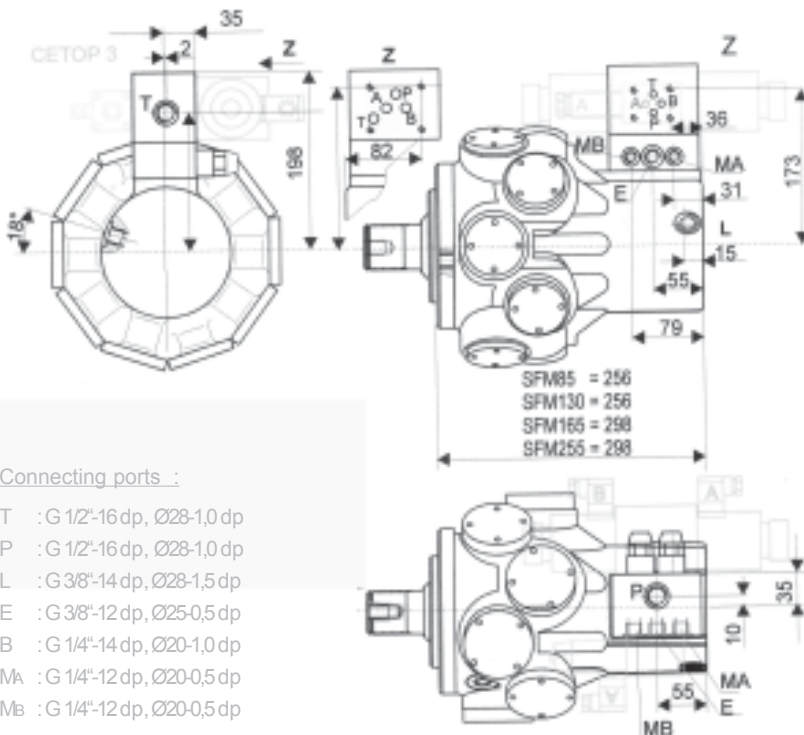
Right angle gear drive with
all kind of shafts available.

Modular control system for Series 1 and 2

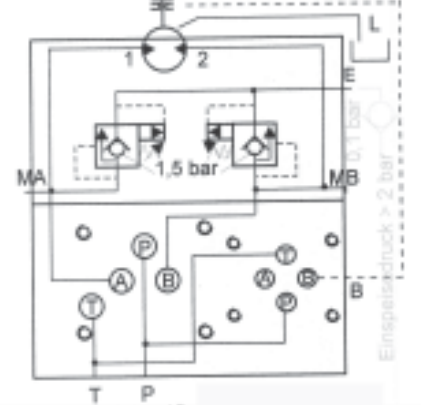
Four different standard pressure cut off systems with different setup settings and six different control bloks for valves available.

Example :

Two separate adjustable pressure valves, releasing of pressure into the other side, including of external preload. Valve blok with incorporated valve for break release.



Pressure in port A, rotation right / left at view on the shaft end.



Port A und B, separate pressure settings with preloaded valves, separate adjustable. Releasing of pressure into the other side. Setup pressure separate adjustable.

Port E is closed in standard operation.

With preloading in port E : check valve is recommended.

Pressure measuring ports MA and Mb are closed in standard operation.

Option : Minimeß coupling in MA and Mb.

Subject to change.

SPITZNAS

Maschinenfabrik GmbH, Fellerstraße 4, D-42555 Velbert
Tel: +49-(0)2052-605-0 Fax: +49-(0)2052-605-29
Email: sales@spitznas.de Internet: http://www.spitznas.com

09/10 E