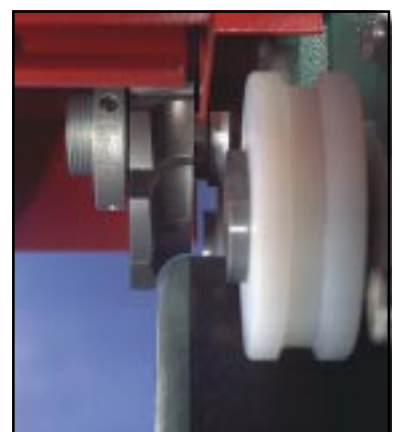
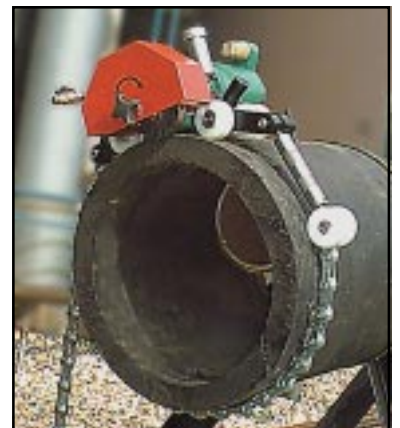


PIPE CUTTING MACHINE

- AIR
- HYDRAULIC

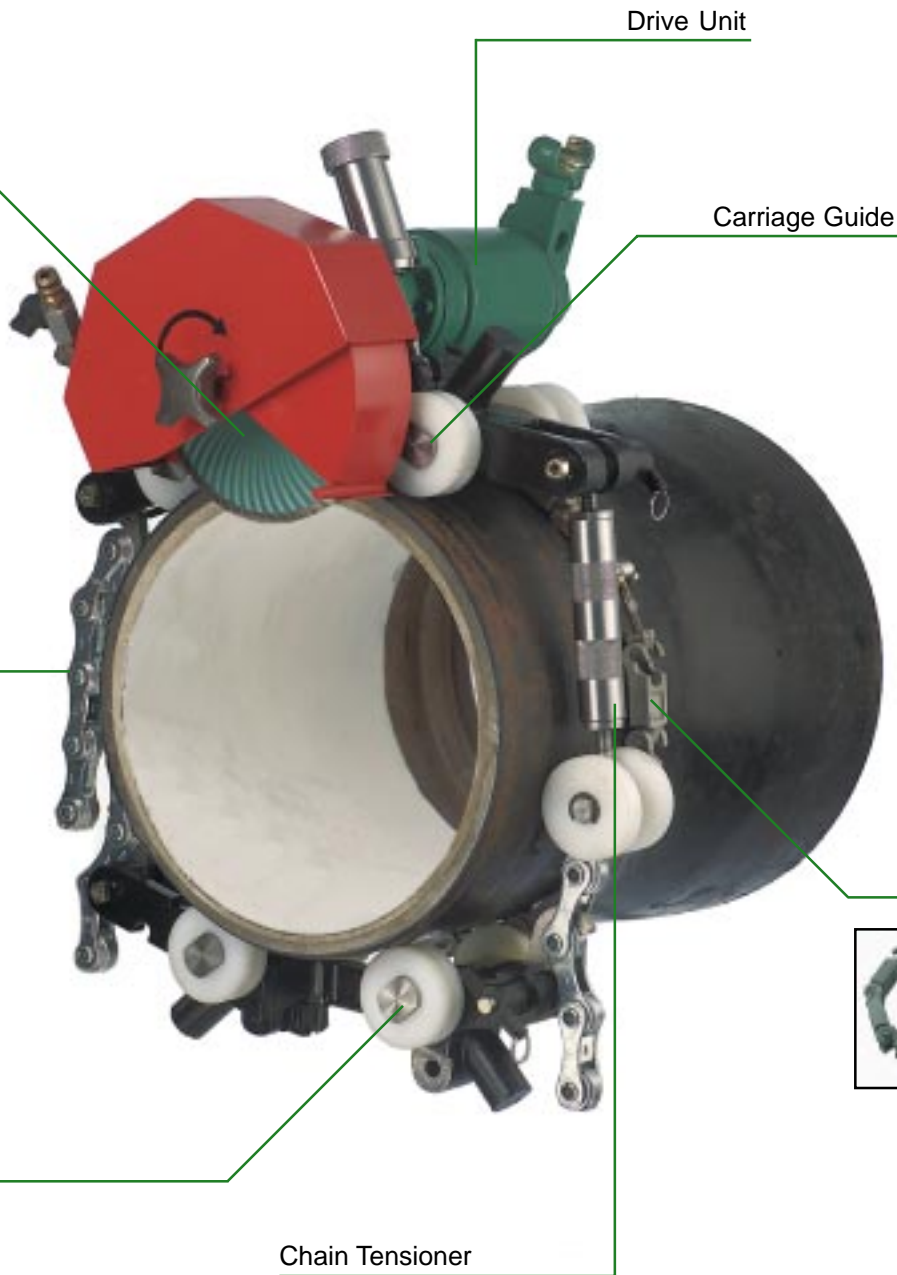


MACHINE FEATURES



Cutting Tools

Bevelling Tools



Guide Chain

Water Tank

Tool Kit

Metal Carrying Case



LIST OF COMPONENTS

| Description | Part No. | Technical Specification | | | | | Application |
|----------------------------|-------------|--|--|---------------------------|---------------------------|------------------------------|-----------------------|
| DRIVE UNIT | | Power kW (H.P.) | Air consumption m ³ /min (cfm) | Gears | Weight kg (lbs) | Height mm (in.) | |
| Air | 5 8002 7000 | 1.8 (2.3) | 2.2 (77) | 2 | 10.9 (24) | 250 (10") | Cutting and Bevelling |
| | 5 8002 7100 | 1.0 (1.3) | 1.3 (45.5) | 1 | 9.7 (21.4) | 250 (10") | Cutting |
| Hydraulic | 5 8006 7000 | - AVAILABLE ON REQUEST - | | | | | Cutting and Bevelling |
| | 5 8006 7100 | - AVAILABLE ON REQUEST - | | | | | Cutting |
| CARRIAGE GUIDE | | | | | | | |
| - Small | 5 8002 8090 | incl. Chain and Chain Tensioner | | | | Pipe Ø100-300mm (4-12") | |
| | | Serves as Additional Carriage for Pipes over 300 mm (12") Diameter | | | | | |
| - Large | 5 8002 8100 | incl. Chain and Chain Tensioner | | | | Pipe Ø 300 - 800 mm (12-32") | |
| GUIDE CHAINE | | | | | | | |
| | 5 8002 8760 | incl. Chain Connector and 18 chain links | | | | Up to 300 mm (12") | |
| | 5 8002 8770 | incl. Chain Connector and 34 chain links | | | | Up to 600 mm (24") | |
| | 8 8002 8780 | incl. Chain Connector and 46 chain links | | | | Up to 800 mm (32") | |
| SPARE LINK | 5 8001 8750 | Length 57 mm (2 ^{1/4} ") | | | | For Chain Extension | |
| DIAMOND BLADES | | Diameter mm (in.) | | Cutting Depth mm (in.) | | Tube Material | |
| | 9 2530 1110 | 115 | (4 ^{1/2} ") | 20 | (3/4") | Ductile Iron with Clay | |
| | 9 2530 1150 | 150 | (6") | 35 | (1 ^{3/8} ") | | |
| | 9 2530 1180 | 180 | (7") | 50 | (2") | | |
| | 9 2530 1200 | 200 | (8") | 60 | (2 ^{3/8} ") | | |
| | 9 2530 2110 | 115 | (4 ^{1/2} ") | 20 | (3/4") | Concrete and Clay | |
| | 9 2530 2150 | 150 | (6") | 35 | (1 ^{3/8} ") | | |
| | 9 2530 2180 | 180 | (7") | 50 | (2") | | |
| | 9 2530 2200 | 200 | (8") | 60 | (2 ^{3/8} ") | | |
| | 9 2530 3110 | 115 | (4 ^{1/2} ") | 20 | (3/4") | Plastic and PVC | |
| | 9 2530 3150 | 150 | (6") | 35 | (1 ^{3/8} ") | | |
| | 9 2530 3180 | 180 | (7") | 50 | (2") | | |
| | 9 2530 3200 | 200 | (8") | 60 | (2 ^{3/8} ") | | |
| BEVELLING TOOLS | | Diameter | | Material | | Application | |
| | 9 2530 7040 | 100 (4") | | HSS | | Chamfer 22 degrees | |
| | 9 2530 7060 | 100 (4") | | HSS | | Chamfer 35 degrees | |
| | 9 2530 7090 | 100 (4") | | HSS | | Chamfer 45 degrees | |
| | 9 2530 7410 | 100 (4") | | HSS | | R 10 (R ^{3/8} ") | |
| WATER TANK | 5 8002 9100 | 10 Litres | | | Water Supply | | |
| TOOL KIT | 5 8002 9200 | Open-ended Spanner, Hook Spanner, Hex. Wrench | | | Assembly and Disassembly | | |
| METAL CARRYING CASE | 5 8002 9300 | Metal Case with Trays | | | Safety and Easy Transport | | |
| SERVICE UNIT | 9 2406 0260 | incl. Water Separator and Lubricator | | | Long Life | | |

SELECTION OF COMPONENTS

APPLICATIONS



TABLE FOR SELECTION OF COMPONENTS FOR DIFFERENT PIPE DIAMETERS

| PIPE DIA. mm (in.) | COMPONENTS | BLADES | Blade Diameter mm (in.) max. Cutting Depth mm (in.) | | |
|--------------------------|--|---------------------------|--|---------------------|-------------------------|
| 100 - 125 (4" - 5") | Small Carriage Guide + Chain Tensioner + Drive Unit | 115 (4 1/2") 20 (3/4") | - | - | - |
| 125 - 200 (5" - 8") | Small Carriage Guide + Chain Tensioner + Drive Unit | 115 (4 1/2") 20 (3/4") | 150 (6") 35 (1 3/8") | - | - |
| 200 - 300 (8" - 12") | Small Carriage Guide + Chain Tensioner + Drive Unit | 115 (4 1/2") 20 (3/4") | 150 (6") 35 (1 3/8") | 180 (7") 50 (2") | - |
| 300 - 400 (12" - 16") | Large Carriage Guide + Chain Tensioner + Drive Unit | 115 (4 1/2") 20 (3/4") | 150 (6") 35 (1 3/8") | 180 (7") 50 (2") | 200 (8") 60 (2 3/8") |
| 300 - 800 (12" - 32") | Large Carriage Guide + Chain Tensioner + Small Carriage Guide + Drive Unit + Tension Chain | 115 (4 1/2") 20 (3/4") | 150 (6") 35 (1 3/8") | 180 (7") 50 (2") | 200 (60) 60 (2 3/8") |

EXAMPLE

Cutting ductile iron 600 mm (24") with a wall thickness 16 mm (5/8") including chamfer R 10 mm for neat connections:

| | Part Nr. | | Part Nr. |
|------------------------|--------------------|-----------------------|--------------------|
| - Drive Unit | 5 8002 7000 | - Beveling Tool | 9 2530 7410 |
| - Large Carriage Guide | 5 8002 8100 | - Water Tank | 5 8002 9100 |
| - Small Carriage Guide | 5 8002 8090 | - Tool Kit | 5 8002 9200 |
| - Guide Chain | 5 8002 8770 | - Metal Carrying Case | 5 8002 9300 |
| - Diamond Blade | 9 2530 1180 | - Service Unit | 9 2406 0260 |

SPITZNAS

Maschinenfabrik GmbH, Fellerstraße 4, D-42555 Velbert, Germany
 Tel: +49-(0)2052-605-0 Fax: +49-(0)2052-605-29
 Email: sales@spitznas.de Internet: <http://www.spitznas.de>